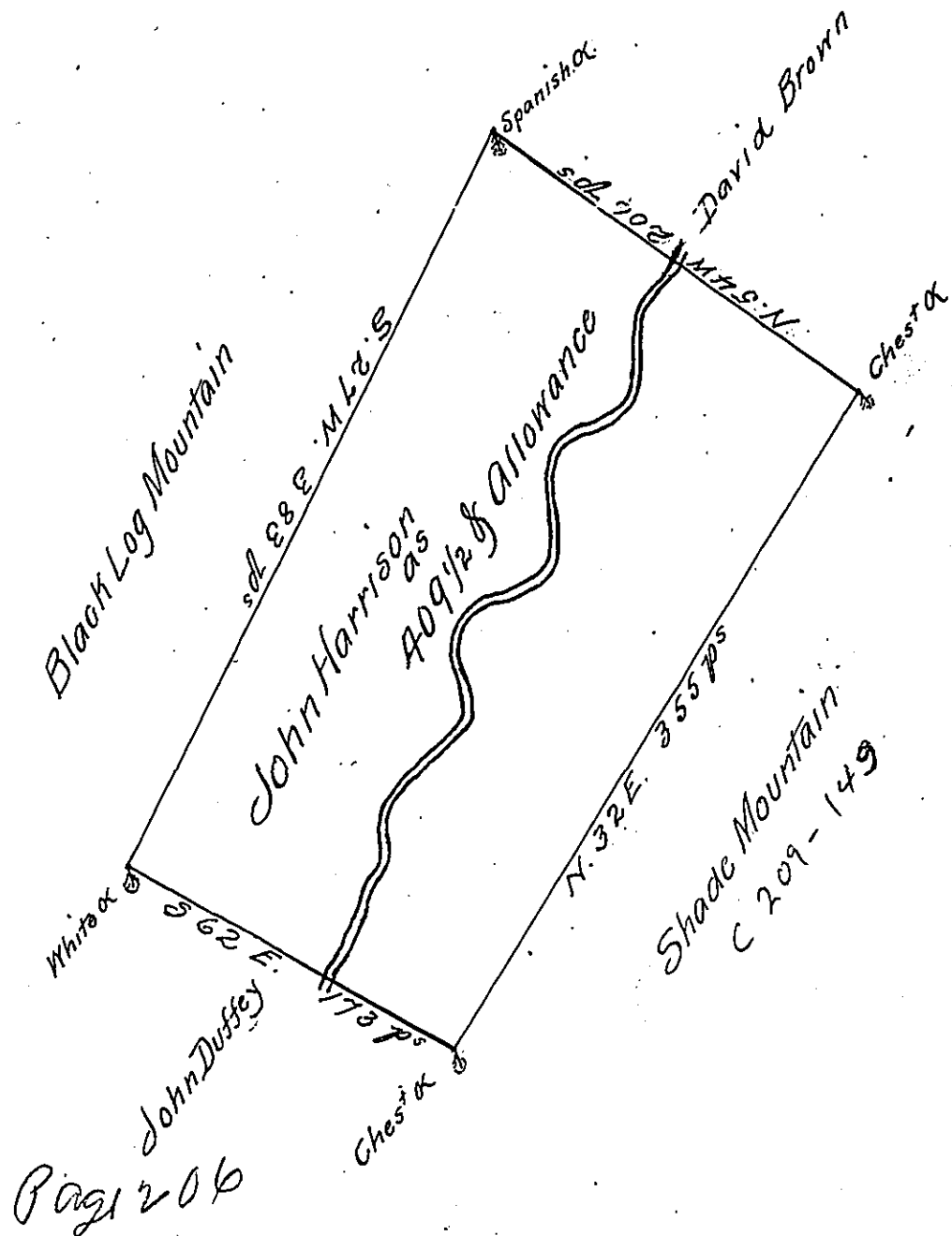


25-127



In pursuance of an order N^o 2744 dated the tenth day of February 1767
 Surveyed for John Harrison the above described Tract of land
 Situate on the Shade Run adjoining and below John Duffey between
 Shade and Black Log Mountains in the County of Cumberland
 Containing four hundred and nine Acres and a half and the usual
 allowance of six acres p. ct. for Roads &c

P. Richard Tea Depy Surveyor

To John Lukens Esq^t Surveyor General

IN TESTIMONY that the above is a copy of the original remaining on file in
 the Department of Internal Affairs of Pennsylvania, made
 conformably to an Act of Assembly approved the 16th day of
 February, 1833, I have hereunto set my Hand and caused
 the Seal of said Department to be affixed at Harrisburg,
 this Fourth day of November 1910

Henry Houck
 Secretary of Internal Affairs.